



# INDOFINE Chemical Company, Inc.

121 Stryker Lane, Bldg. 30, Suite 1 • Hillsborough, NJ 08844 • U.S.A.

Phone: (908) 359-6778 • FAX: (908) 359-1179

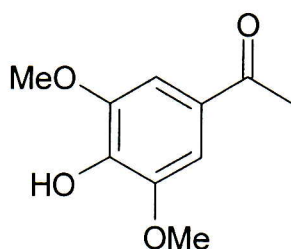
website: [www.indofinechemical.com](http://www.indofinechemical.com)

e-mail: [chemical@indofinechemical.com](mailto:chemical@indofinechemical.com)

## CERTIFICATE OF ANALYSIS

Cat No.: 026001

<u>Product:</u>	<b>3',5'-DIMETHOXY-4'-HYDROXYACETOPHENONE</b> (Acetosyringone)
<u>CAS No.:</u>	[2478-38-8]
<u>Lot Number:</u>	0804016
<u>Molecular Formula:</u>	C <sub>10</sub> H <sub>12</sub> O <sub>4</sub>
<u>Molecular Weight:</u>	196.20
<u>Melting Point:</u>	125-126°C
<u>Appearance:</u>	White powder
<u>Solubility:</u>	Soluble in Chloroform
<u>Moisture (KF):</u>	0.29%
<u>Purity (HPLC):</u>	99.03%



Manufacturing Date: 3/25/2008

Expiration Date: 3/24/2018



# INDOFINE Chemical Company, Inc.

121 Stryker Lane, Bldg. 30, Suite 1 • Hillsborough, NJ 08844 • U.S.A.

Phone: (908) 359-6778 • FAX: (908) 359-1179

website: [www.indofinechemical.com](http://www.indofinechemical.com)

e-mail: [chemical@indofinechemical.com](mailto:chemical@indofinechemical.com)

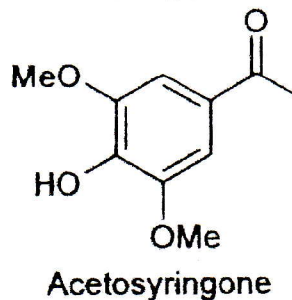
Catalog No.: 026001

Product: 3',5'-Dimethoxy-4'-hydroxyacetophenone  
(Acetosyringone)

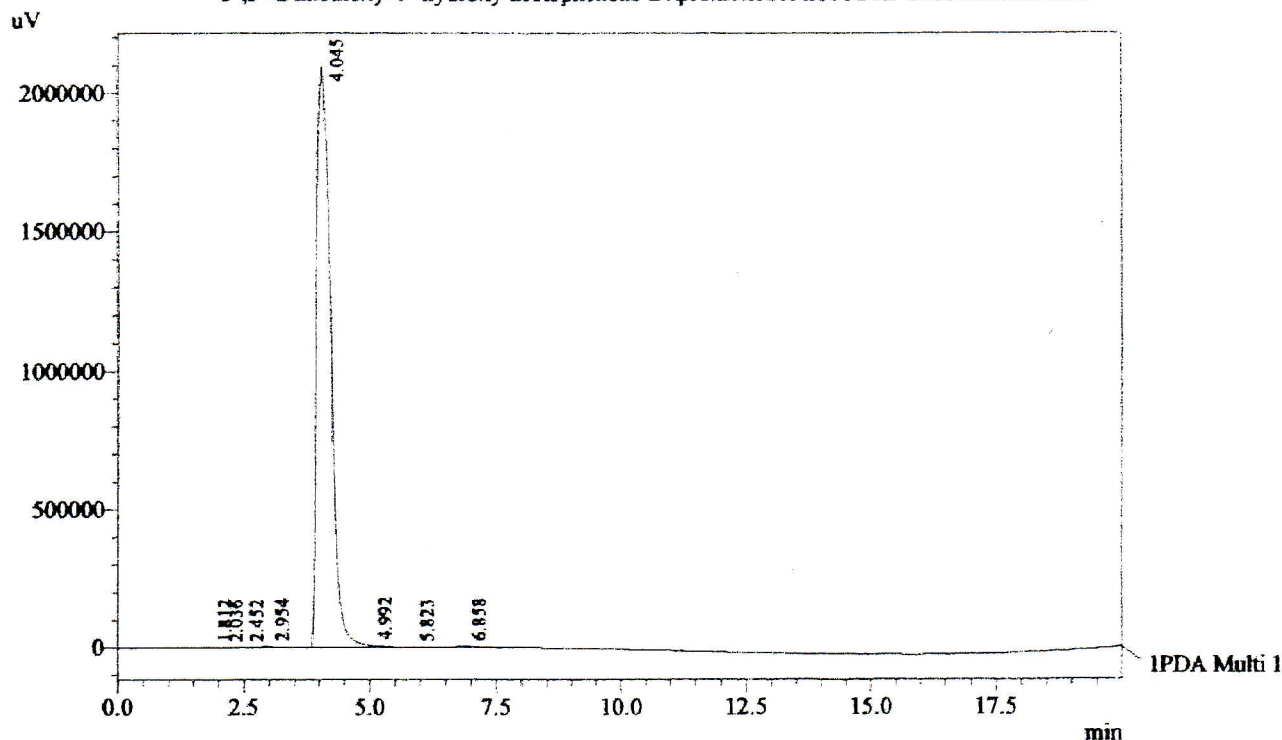
Lot No.: 0804016

Date Acquired : 3/18/2008 11:16:48 AM  
Acquired by : Ramana  
Sample Name : 3',5'-Dimethoxy-4'-hydroxy acetophenone  
Sample ID : Aceto syringone  
Injection Volume : 20 uL  
Data Filename : 180308D.lcd  
Method Filename : Linear Isocratic.M.lcm

Description:  
Column : Inertsil C-18, 250X4.6mm 5.0µm  
Flow : 1.000mL/min.  
Mobile Phase : A(50% Water 0.05% TFA) : B(50% ACN)



Chromatogram  
3',5'-Dimethoxy-4'-hydroxy acetophenone D:\promonence\2008\Mar-2008\180308D.lcd



1 PDA Multi 1 / 230nm 4nm

### PeakTable

PDA Ch1 230nm 4nm

Peak#	Ret. Time	Area	Height	Area %
1	1.812	22860	2201	0.056
2	2.036	24238	1615	0.059
3	2.452	8771	1082	0.022
4	2.954	78963	4736	0.194
5	4.045	40342974	2098281	99.035
6	4.992	123120	8314	0.302
7	5.823	10194	612	0.025
8	6.858	124894	4415	0.307
Total		40736015	2121255	100.000